

- DIESEL GENERATING SET

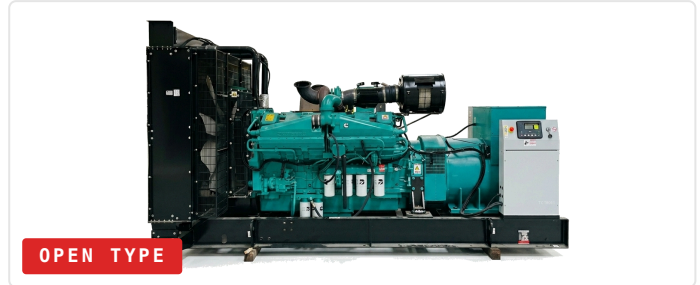
- POWERED BY CUMMINS KTA38-G9

TC1250T 1250 KVA

**INDUSTRIAL STANDBY & PRIME
POWER SOLUTION**



SILENT TYPE



OPEN TYPE

STANDBY (ESP)

1250

kVA // 1000 kW

PRIME (PRP)

1125

kVA // 900 kW

VOLTAGE // 3Φ

400V

1805 A @ 50 Hz

NOISE @ 7M

≤ 87 ± 2

dB(A) // Silent @ 7m

ELECTRICAL SPECIFICATIONS

01 // ELECTRICAL

Model	TC1250T
Frequency	50 Hz
Phases / Wires	3 Phase, 4 Wire
Voltage	400 / 230 V
Rated Current	1805 A
Rated Speed	1500 r/min
Power Factor (cos φ)	0.8
Fuel Consumption @ 100%	250 L/h
Engine	Cummins KTA38-G9
Alternator	Stamford S6L1D-F41
Control Module	DSE 7320 MKII

WEIGHT & DIMENSIONS

02 // PHYSICAL

- OPEN TYPE

L 4410 ×
W 2070 ×
H 2375 mm

7992 KG

- SILENT TYPE

L 12192 ×
W 2438 ×
H 2896 mm

14942 KG

STANDARDS GB/T 2820-2009 // ISO 8528 // CE // CNAS // IAF

- STANDARD INCLUDED

Engine, alternator, cooling system, base frame (excl. fuel tank), shock absorber, air intake, control box with mains floating charge, plastic fan blades.

- OPTIONAL ADD-ONS

Base frame with fuel tank, water jacket heater, fuel water separator, fuel heater, level sensors, switch box, auto-fueling system, battery frame, anti-condensation heater.

- ACCESSORIES BUNDLED

Silencer, bellow, exhaust silencing system accessories (matching engine), battery, starting cord assembly, gen-set documentation, tools matched to engine.

- SECTION 01 // DIESEL ENGINE -

ENG.

MANUFACTURER: CUMMINS // 12-CYLINDER 60° V // TURBOCHARGED & AFTER-COOLED

POWER PLANT

4-STROKE DIESEL

CUMMINS KTA38-G9

1089 KW @ 1500 RPM

ENGINE CORE

01 //
POWER PLANT

Manufacturer	CUMMINS
Model	KTA38-G9
Engine Speed (rated)	1500 RPM
Cylinder / Arrangement	12 / 60° V
Displacement	38.0 L
Bore × Stroke	159 × 159 mm
Compression Ratio	13.9 : 1
Max Standby Power @ Rated	1089 kW
Frequency Regulation	≤ 0.25 %
Governor Type	Electronic
Aspiration / Cooling	Turbo & After-cooled

FUEL / OIL / AIR

02 //
CONSUMABLES

Fuel Consumption @ 100% PRP	250 L / h
Total Oil Capacity w/ Filters	135 L
Engine Air Flow	1309 L/s
Exhaust Gas Flow	3540 L/s
Exhaust Temperature	529 °C
Max Back Pressure	10 kPa
Radiator & Engine Capacity	225.0 L
Max Water Temperature	114 °C
Thermostat Range	82 - 93 °C
Starter Voltage	24 V DC
Injection Type	P/T Pump

- KEY ENGINE ADVANTAGES

- ▶ **Cummins KTA38 platform:** proven heavy-duty engine for industrial standby and prime power.
- ▶ Alloy-steel block and forged connecting rods for exceptional durability under sustained load.
- ▶ High combustion efficiency and optimised fuel consumption, engineered for continuous running.
- ▶ P/T pump injection technology — robust, complete combustion across load profiles.
- ▶ Globally available Cummins service parts and authorised service network.
- ▶ Turbocharged & after-cooled — high power density at altitude and elevated ambient.

- SECTION 02 // AC ALTERNATOR -

ALT.
 MANUFACTURER: CUMMINS GENERATOR TECHNOLOGIES // BRUSHLESS PMG // IP23 CLASS H

STAMFORD S6L1D-F41

3-PHASE AC
BRUSHLESS PMG

IP23 / CLASS H

CORE CONFIGURATION

01 // BUILD

Manufacturer	STAMFORD
Type	S6L1D-F41
Number of Phases	3
Power Factor (cos φ)	0.8
Pole Count	4
Bearing	1 (Single)
Coupling	Direct (Flexible Disc)
Exciter Type	Brushless PMG

ELECTRICAL / PROTECTION

02 // PROTECTION

Insulation Class / Temp Rise	H / H
Degree of Protection	IP 23
AVR Model	MX321
Altitude Rating	≤ 1000 m
Winding Pitch	2 / 3
Winding Leads	6 / 12
Voltage Regulation	± 1.0 %
Overspeed Capability	2250 r/min (1 min)

- STAMFORD ALTERNATOR QUALITY PROGRAM

- ▶ Wire-wound (random-wound) stator technology — industry benchmark for all gen-set configurations.
- ▶ Brushless excitation with PMG-fed AVR — maintenance-free, high-reliability voltage control.
- ▶ IP21, IP22, IP23 and IP44 enclosure protection options available.
- ▶ Ideal for marine/offshore, UPS, telecoms, construction and continuous/standby power.
- ▶ Manufactured under ISO 9001 and ISO 14001 certified environments.
- ▶ Licensed service network across Southeast Asia for parts and warranty support.

STANDARDS GB755 // BS5000 Part 3 // VDE 0530 // NEMA MG1-22 // IEC-34 // CSA C22-100 // AS1359

- SECTION 03 // CONTROL MODULE -

CTRL.

AUTO START & AUTO MAINS FAILURE (AMF) CONTROL MODULE // IP65 // ETHERNET-READY

AMF + AUTO START

GEN-SET CONTROLLER

IP65 / 250-EVENT LOG

DEESEA DSE 7320 MKII

PHYSICAL SPECS

01 // DIMENSIONS

Overall Size	240 × 181 × 42 mm
Overall (imperial)	9.4" × 7.1" × 1.6"
Panel Cutout	220 × 160 mm
Panel Cutout (imperial)	8.7" × 6.3"
Weight	400 g
Ingress Protection	IP65 (with gasket)
Display	132 × 64 px • 4-line LCD
Inputs / Outputs	9 / 8 Configurable
Event Log	250 Events
Operating Temperature	-30 to +70 °C

MKII ENHANCEMENTS

02 // UPGRADES

Processing Power	Upgraded CPU
USB Host Port	Type-A (Firmware)
USB Device Port	Type-B (PC Config)
Front Editing	PIN Protected
Config Suite	v2 Compatible
Tier 4 CAN Support	Enhanced
Backward Mounting	Identical Cutout
Languages	Multi-lingual
DSENet® Expansion	Supported
Real-Time Clock	Battery Backed-up

- CORE FEATURES

- 4-Line back-lit LCD text display
- Five-key menu navigation
- Front panel editing with PIN protection
- Customisable status screens & power save
- Up to 3 remote display units
- Tier 4 CAN engine support
- CAN & Magnetic Pick-up sensing
- Integral PLC editor

- PROTECTION & MONITORING

- kW & kVAR protection
- Reverse power (kW & kVAR) protection
- Unbalanced load protection
- Independent earth fault trip
- Charge alternator failure alarm
- Fuel usage monitor & low-fuel alarms
- LED and LCD alarm indication
- 3 configurable maintenance alarms

- LOAD & POWER CONTROL

- Automatic load transfer (AMF)
- Load shedding & dummy load outputs
- Power monitoring (kWh, kVAR, kVAh)
- Manual speed control (CAN engines)
- Manual fuel pump control
- Engine exerciser schedule
- Idle control for starting & stopping
- Multiple date/time scheduler

- CONNECTIVITY & SOFTWARE

- USB host + device connectivity
- RS232 & RS485 communications
- Configurable Gencomm pages
- Remote SCADA monitoring via PC software
- Advanced SMS messaging (start/stop via SMS)
- Ethernet via DSE860/865 modules
- Licence-free DSE Config Suite PC software
- DSENet® expansion compatible